
Illinois Report Card Review and Assessment

— Mr. Chrisman and Dr. Mandrell —

December 2019

Graduation Rate

- Calculated by dividing the number of students who graduate in four years with a diploma by the numbers of students who started their freshmen year.
 - With the addition of students who have moved in
 - With the subtraction of students who transferred out, emigrated out of the country, or passed away
- 5 year Cohort- graduation rate is based on the 1st time 9th graders in fall 2014 school year 14-15 and graduating five years later at the end of the 2018-2019 school year.
- **Our Graduation Rate**

Freshmen On Track

- Students must pass 5 credits during their Freshman year
- Can't fail more than . 5 credits in the core classes
 - Reading
 - Math
 - Science
 - Social Studies
- Our Percentage

SAT- Scholastic Aptitude Test

- Juniors take the test
- College Entrance Exam
- Focuses on the skills and knowledge learned
- The tests measures
 - Learned in high school
 - Need to succeed in college and career training

SAT- Scholastic Aptitude Test Continued

- Average Scores for 2019
 - Total Average score 1059
 - Highest 1600
 - Lowest 400
 - Evidence Based Reading/ Writing average score 531
 - Highest- 800
 - Lowest- 200
 - Mathematics average score 528
 - Highest - 800
 - Lowest - 200
- Our scores

SAT V. ACT

- 2019
 - SAT - 987.10 = 19 on ACT
- 2018
 - SAT- 1085.9= 21 on ACT
- 2017
 - SAT- 1010.5 = 19 on ACT

ISA- Illinois Science Assessment

- Science Assessment given to students in 5th, 8th, and students in Biology 1
 - 2020- All 11th grade students will take the test instead of the Biology class
- Based on the Next Generation Science Standards (NGSS)
- [Our High School Science Scores](#)
- [Our Junior High Science Scores](#)
- [Our Elementary Science Scores](#)

IAR- Illinois Assessment of Readiness

- Students in grades 3rd- 8th take the test
- Primary purpose of the IAR is to allow students to demonstrate what they know and can do in Math and English/ Language arts
- Assist educators in supporting student learning
- Make use of technology in assessments
- Advance accountability at all levels
- Provide a measure of college and career readiness for students

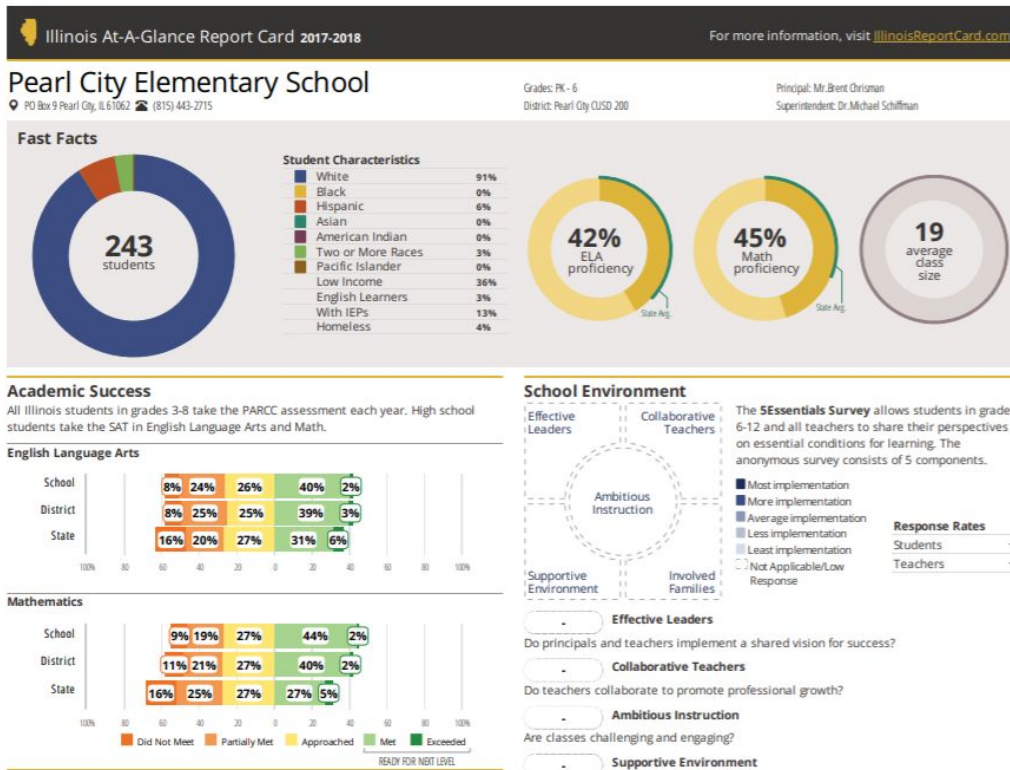
IAR- Illinois Assessment of Readiness Continued

- English language arts/literacy (ELA/L) assessments focused on writing effectively when analyzing text
- Mathematics assessments focused on applying skills and concepts, understanding multi-step problems that require abstract reasoning, and modeling real-world problems with precision, perseverance, and strategic use of tools.
- [Our Elementary Scores](#)
- [Our Junior High Scores](#)




Pearl City Elementary School (at-a-glance) 18/19



Pearl City Elementary School (at-a-glance) 17/18



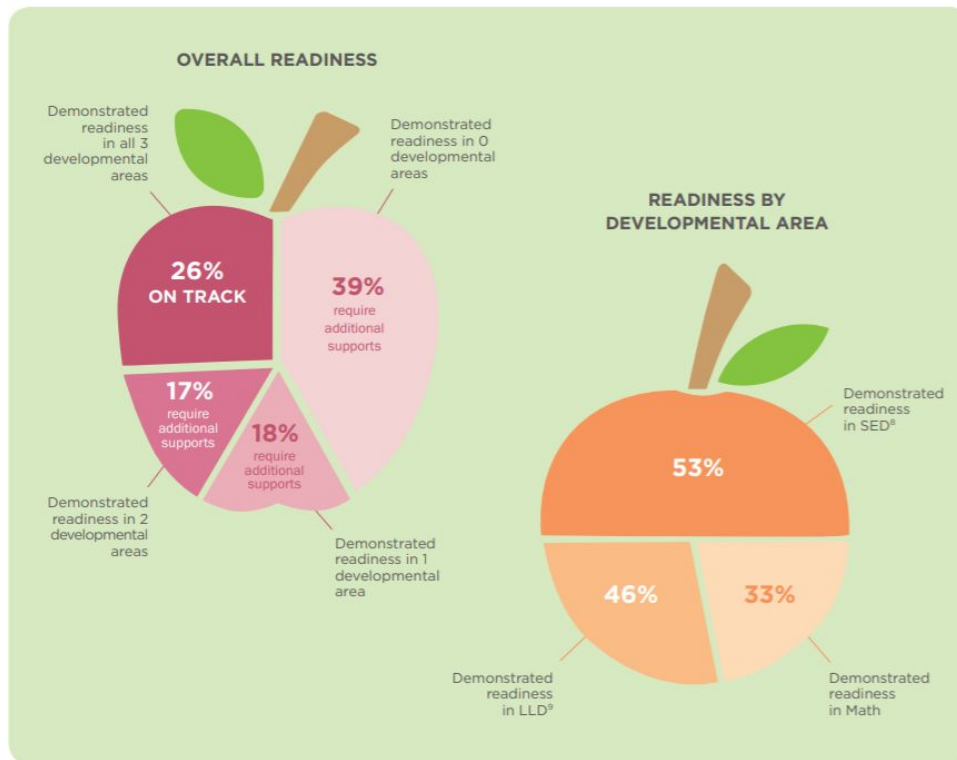
KIDS 14 State Readiness Measures (kindergarten)

14 STATE READINESS MEASURES	4 KEY LEARNING DOMAINS	3 KEY DEVELOPMENTAL AREAS
Curiosity and Initiative in Learning Self-Control of Feelings and Behavior Engagement and Persistence	Approaches to Learning & Self-Regulation (ALT-REG) Assesses a child's development of persistence, curiosity, and ability to self-regulate.	 SOCIAL AND EMOTIONAL DEVELOPMENT (SED & ALT-REG)
Relationships and Social Interactions with Familiar Adults Relationships and Social Interactions with Peers	Social and Emotional Development (SED) Assesses a child's development of feelings, behavior, and relationships with nurturing adults and peers.	
Communication and Use of Language (Expressive) Reciprocal Communication and Conversation Comprehension of Age-Appropriate Text Phonological Awareness Letter and Word Knowledge	Language and Literacy Development (LLD) Assesses a child's progress in developing foundational language and literacy skills by observing communication, conversation, awareness of text, and letter and word knowledge. These skills can be demonstrated in any language and in any mode of communication.	 LANGUAGE AND LITERACY DEVELOPMENT (LLD)
Classification Number Sense of Quantity Number Sense of Math Operations Shapes	Math (COG:MATH) Assesses a child's number sense, knowledge of shapes, and ability to classify objects through observation, exploration of people and objects, and objects and concepts.	 MATH (COG:MATH)

KIDS ASSESSMENT RESULTS- K (regionally)

	% Of Kindergarteners demonstrating readiness by Development Area		
District City	S/E Dev.	Lang./ Dev.	Math
	53%	46%	33%
Chadwick	86%	82%	75%
Dakota	70%	74%	43%
East Dubuque	19%	45%	43%
Lanark	70%	55%	36%
Freeport	26%	25%	10%
Galena	7%	29%	38%
Lena	59%	54%	46%
Orangeville	40%	53%	33%
Hanover	71%	58%	38%
Pearl City	55%	27%	80%
Pecatonica	47%	44%	39%
Scales Mound	92%	67%	83%
Stockton	88%	88%	85%
Warren	33%	30%	56%
Mount Carroll	76%	51%	42%

KIDS State Results

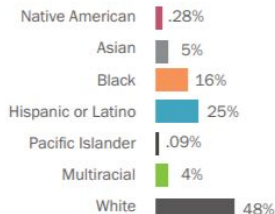


Overall Snapshot of the 18/19 assessment

A 2018-2019 Illinois Kindergarten Readiness Snapshot

OVERALL KINDERGARTEN DATA

KINDERGARTEN ENROLLMENTⁱ



30%

of kindergartners were previously enrolled in state-funded pre-Kⁱⁱ

752

districts in Illinois have kindergarten classrooms

129,563

eligibleⁱⁱⁱ students enrolled in kindergarten

12%

of kindergartners have individualized education programs (IEP)

49%

of kindergartners qualify for free or reduced-price lunch^{iv} (FRPL)

26%

of kindergartners are English learners (EL)

KIDS DATA

6,290
kindergarten teachers implemented KIDS

89%
of kindergartners observed with KIDS

OVERALL READINESS

26% All 3 Developmental Areas
17% 2 Developmental Areas
18% 1 Developmental Area
39% 0 Developmental Areas

26%
of kindergartners demonstrated readiness in all three developmental areas^v

Where do we go next???

- New Math Curriculum
- New Math Teacher
- Workshop for HS Science Teacher to help with ISA
 - Juniors only will be taking the ISA instead of Biology students
- First Year with IAR
 - Using the Digital Library to help prepare for this year
- New Reading curriculum for the District
- New Sensory room & corridor for the Elementary
- New Training for our Paraprofessionals to handle extreme behaviors